



LP-2011-NVB

Effective: May 1, 2011
Supersedes All Previous Pricing

Price List

Import

Valve and Service Boxes

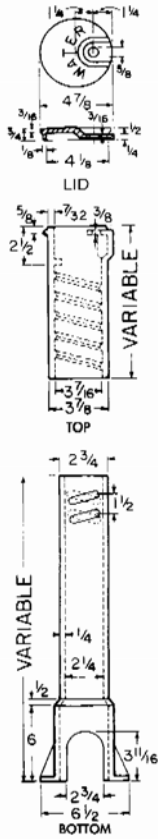
Standard and Heavy Duty

<u>Product</u>	<u>Pages</u>
6500 Service Boxes	1
Standard 6850 Series Two-piece Screw-type Valve Boxes	2
Standard 6855 Series Two-piece Slip-type Valve Boxes	3
Standard 6860 Series Three-piece Screw-type Valve Boxes	4
Standard Drop and Lock Lids	5
Heavy-duty Valve Boxes	6

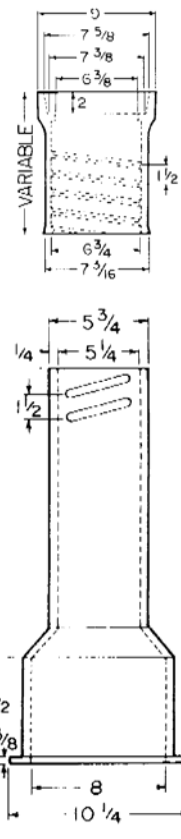
Note:
All weights in this list price sheet are estimates for shipping purposes only . Please refer the TylerUnion product catalogs for weights of individual products

Visit Our Website: www.tylerunion.com

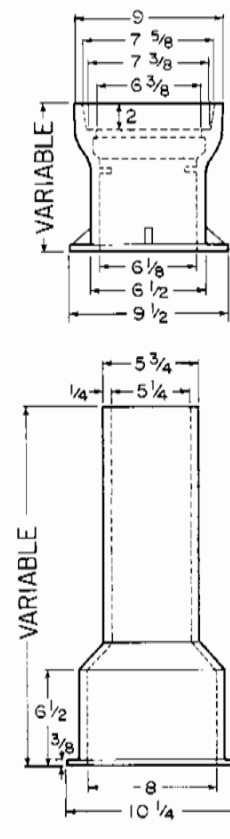
TYLER UNION CAST IRON STANDARD MUNICIPAL CASTINGS



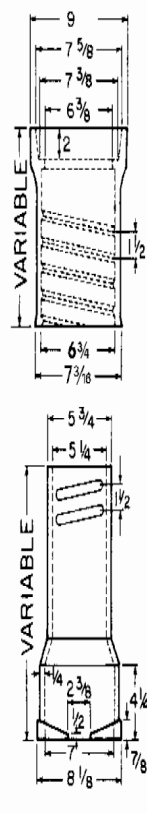
6500 Box



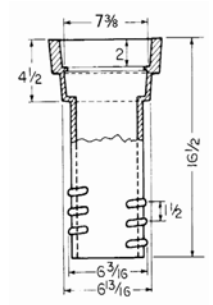
6850 Box



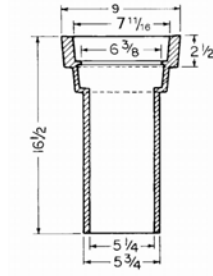
6855 Box



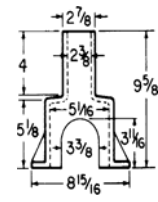
6860 Box



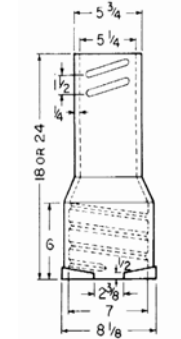
69 Riser



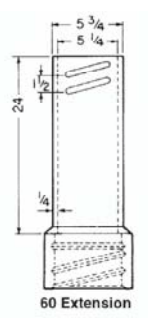
69-A Riser



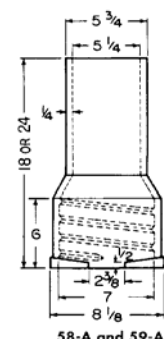
6500 Enlarged Base



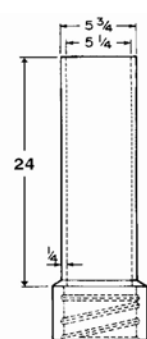
58 & 59 Extension



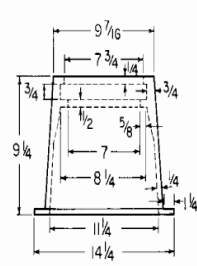
60 Extension



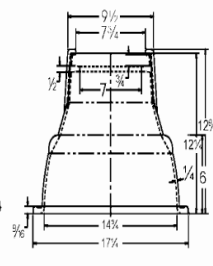
58-A and 59-A Extension



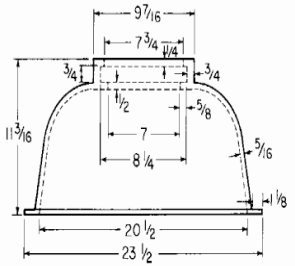
60-A Extension



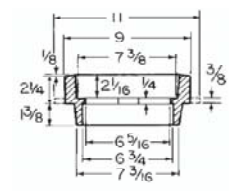
6860 #4 Base



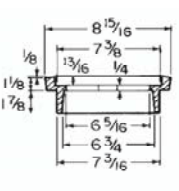
6860 #6 Base



6860 160 Base



5-1/4 x 2-1/4" Riser

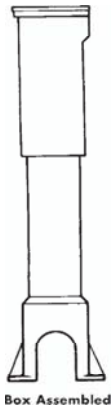


5-1/4 x 1-1/8" Riser

TYLER UNION NON-DOMESTIC VALVE BOXES LP2011-NVB

6500 SERIES CAST IRON SERVICE BOXES, ADJUSTABLE

Item	Ship Code	Item UPcode 670610	HEIGHT RANGE	List Price	Crate Quant	Weight lbs
SCREW TYPE WITH WATER LID						
89A(12T+12B)		111863	15-21"	\$ 29.50	100	20
90B(12T+15B)		111870	18-24"	\$ 31.00	100	21
90C(15T+15B)		111887	21-27"	\$ 35.00	100	24
91C(15T+21B)		111894	24-33"	\$ 38.00	100	26
92C(15T+27B)		111900	30-39"	\$ 41.00	80	28
92D(18T+27B)		111917	30-42"	\$ 42.50	80	29
93D(18T+33B)		111924	36-48"	\$ 48.50	70	33
93E(24T+33B)		111931	36-54"	\$ 58.00	60	39
94E(24T+39B)	RS	111948	42-60"	\$ 65.00	60	44
95E(30T+39B)	RS	111955	41-64"	\$ 72.00	50	49
100E(24T+51B)		111832	54-72"	\$ 80.50	45	55
100F(30T+51B)		111849	54-78"	\$ 87.50	40	59
101F(30T+57B)		111856	60-84"	\$ 90.50	40	61
TOP SECTION WITH WATER LID						
12T		112006		\$ 18.00	200	12
15T		112013		\$ 22.00	180	15
18T		112020		\$ 23.50	144	16
24T	RS	112037		\$ 33.00	100	22
30T	RS	112044		\$ 39.50	80	27
BOTTOM SECTION						
12B		136941		\$ 12.00	200	8
15B		111788		\$ 13.50	200	9
21B		111795		\$ 16.00	100	11
27B		111801		\$ 19.00	100	13
33B		111818		\$ 25.00	100	17
39B	RS	111825		\$ 32.00	100	22
PARTS						
151 Ext		111962	9"	\$ 14.00	200	9
152 Ext	RS	111979	16"	\$ 20.50	200	14
153 Ext		111986	28"	\$ 31.00	100	21
154 Ext	RS	111993	30"	\$ 31.50	100	21
ENLARGED BASE FOR UP TO 2" CURB STOP	RS	136934	6"	\$ 16.50	144	11



RS - Stocked on a Regional Basis.
All others call for availability

TYLER UNION NON-DOMESTIC VALVE BOXES LP2011-NVB

STANDARD 6850 SERIES CAST IRON TWO-PIECE VALVE BOXES

TYLER UNION Valve Boxes are available either pre-assembled or as individual tops and bottoms. For assembled boxes, the UPC codes shown represent a combination of one top and one bottom in the sizes shown. For unassembled boxes, the UPC code represents only a top or a bottom, not a complete box. Therefore, unassembled boxes require ordering tops and bottoms separately.

Size	Ship Code	Item UPcode 670610	HEIGHT RANGE	List Price	Crate Quant	Weight lbs
BOXES ASSEMBLED / LESS LIDS						
461-S(10T+15B)	RS	112280	19-22"	\$ 51.50	40	35
462-S(10T+24B)		112297	27-32"	\$ 63.50	20	43
562-S(16T+24B)	RS	112303	27-37"	\$ 73.50	25	50
563-S(16T+30B)		112310	33-43"	\$ 88.50	20	60
564-S(16T+36B)	RS	112327	39-50"	\$ 97.00	20	66
662-S(26T+30B)	RS	112341	36-52"	\$ 112.00	20	76
664-S(26T+36B)		112358	39-60"	\$ 120.50	20	82
666-S(26T+24B+60Ext)		112365	51-71"	\$ 140.00	20	95
668-S(26T+36B+60Ext)		112372	62-82"	\$ 163.50	20	111
TOPS LESS LID						
10T	RS	112402		\$ 22.00	80	15
16T	RS	112419		\$ 32.50	60	22
26T	RS	112426		\$ 56.00	30	38
BOTTOMS						
15B		112242		\$ 29.50	40	20
24B	RS	112259		\$ 41.00	30	28
30B		112266		\$ 56.00	30	38
36B	RS	112273		\$ 65.00	30	44
48B		452737		\$ 91.50	30	62
60B		452744		\$ 125.00	30	85
EXTENSIONS						
#60 SCREW-TYPE	RS	112389	24"	\$ 42.50	30	29

TYLER UNION NON-DOMESTIC VALVE BOXES LP2011-NVB

STANDARD 6855 SERIES CAST IRON TWO-PIECE VALVE BOXES

TYLER UNION Valve Boxes are available either pre-assembled or as individual tops and bottoms. For assembled boxes, the UPC codes shown represent a combination of one top and one bottom in the sizes shown. For unassembled boxes, the UPC code represents only a top or a bottom, not a complete box. Therefore, unassembled boxes require ordering tops and bottoms separately.

Item	Ship Code	Item UPCode 670610	HEIGHT RANGE	List Price	Crate Quant	Weight lbs
BOXES ASSEMBLED / LESS LIDS						
461-A(10T+15B)	RS	112099	19-22"	\$ 50.00	30	34
462-A(10T+24B)		112105	27-32"	\$ 67.50	30	46
562-A(16T+24B)	RS	112112	27-37"	\$ 81.00	30	55
563-A(16T+30B)		112129	33-43"	\$ 98.50	30	67
564-A(16T+36B)	RS	112136	39-50"	\$ 106.00	30	72
662-A(26T+30B)		112143	36-52"	\$ 122.00	30	83
664-A(26T+36B)	RS	112150	39-60"	\$ 129.50	30	88
666-A(26T+24B+60-AExt)		112167	51-71"	\$ 159.00	30	108
668-A(26T+36B+60-AExt)		112181	62-82"	\$ 184.00	30	125
TOPS LESS LID						
10T	RS	112211		\$ 23.50	80	16
16T	RS	112228		\$ 37.00	30	25
26T		112235		\$ 60.50	30	41
BOTTOMS						
15B		112051		\$ 26.50	40	18
24B		112068		\$ 44.00	30	30
30B		112075		\$ 62.00	30	42
36B	RS	112082		\$ 69.00	30	47
60B		458302		\$ 110.50	30	75
EXTENSIONS						
#58-A / 18B		136637	14"	\$ 38.50	30	26
#59-A / 24B		136644	18"	\$ 41.00	30	28
#60-A		112198	24"	\$ 54.50	30	37

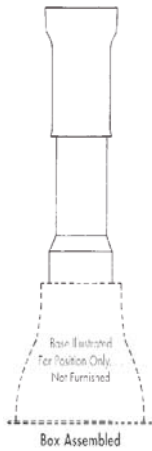
RS - Stocked on a Regional Basis.
All others call for availability

TYLER UNION NON-DOMESTIC VALVE BOXES LP2011-NVB

STANDARD 6860 SERIES CAST IRON THREE-PIECE VALVE BOXES

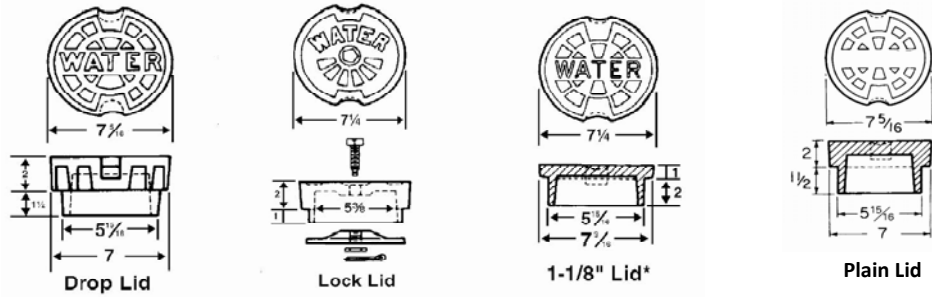
TYLER UNION Valve Boxes are available either pre-assembled or as individual tops and bottoms. For assembled boxes, the UPC codes shown represent a combination of one top and one bottom in the sizes shown. For unassembled boxes, the UPC code represents only a top or a bottom, not a complete box. Therefore, unassembled boxes require ordering tops and bottoms separately.

Item	Ship Code	Item UPcode 670610	HEIGHT RANGE	List Price	Crate Quant	Weight lbs
BOXES ASSEMBLED / LESS LIDS						
AA (10T+12B)		136668	27-31"	\$ 42.50	40	29
A (16T+18B)		136651	33-42"	\$ 56.00	40	38
B (16T+24B)		136675	39-49"	\$ 75.00	32	51
C (16T+30B)		136682	45-54"	\$ 81.00	20	55
CC (16T+36B)		136699	51-60"	\$ 87.00	20	59
D (26T+30B)		136811	45-66"	\$ 104.50	20	71
DD (26T+36B)		136828	51-72"	\$ 110.50	20	75
E (16T+24B+60Ext)		136835	63-72"	\$ 118.00	20	80
F (26T+24B+60Ext)		136842	63-84"	\$ 141.50	20	96
G (26T+36B+60Ext)		136859	74-94"	\$ 153.00	20	104
TOPS LESS LIDS						
10T		112402		\$ 22.00	80	15
16T		112419		\$ 32.50	60	22
26T		112426		\$ 56.00	30	38
BOTTOMS						
12B		250524		\$ 20.50	80	14
18B / 58 Ext	RS	250517		\$ 34.00	60	29
24B / 59 Ext	RS	136958		\$ 42.50	30	33
30B	RS	136613		\$ 48.50	30	37
36B	RS	136620		\$ 54.50	30	39
48B		452713		\$ 95.50	30	65
60B		452720		\$ 134.00	30	91
EXTENSIONS						
#60 SCREW-TYPE		112389	24"	\$ 42.50	30	29
BASES						
#4, 11-1/4" WIDE		381532		\$ 32.50	84	22
#6, 14-3/4" WIDE	RS	381525		\$ 53.00	43	36
#160, 20-1/2" WIDE	RS	256861		\$ 81.00	45	55



TYLER UNION NON-DOMESTIC VALVE BOXES LP2011-NVB

STANDARD DROP & LOCK LIDS



	Ship Code	Item UPcode 670610	List Price	Crate Quant	Weight lbs
LIDS					
5-1/4" DROP LID "WATER"	RS	136910	\$ 13.50	200	9
5-1/4" DROP LID "GAS"		136873	\$ 13.50	200	9
5-1/4" DROP LID "SEWER"	RS	136903	\$ 13.50	200	9
5-1/4" DROP LID Plain (no marking)		136897	\$ 13.50	200	9
5-1/4" LOCK LID	RS	136866	\$ 16.00	200	11
1-1/8" LID*		112532	\$ 13.50	200	9

*Used with 1-1/8" Riser Only

STANDARD FIXED & ADJUSTABLE RISERS

	Ship Code	Item UPcode 670610	List Price	Weight lbs
#69 SCREW TYPE ADJUSTABLE RISER (USES STANDARD DROP LID)				
69 Riser for 6850/60	RS	112396	2-1/2"-9" Inceas \$ 38.50	30 26
#69-A SLIP TYPE ADJUSTABLE RISER (USES STANDARD DROP LID)				
69-A Riser for 6855/65		112204	2-1/2"-12" Increa \$ 42.50	30 29
FIXED RISERS				
5-1/4" x 1-1/8" SLIP-IN*	RS	112549	1-1/8" Increase \$ 12.00	200 8
5-1/4" x 2-1/4" SLIP-IN		112556	2-1/4" Increase \$ 17.50	200 12

*Use with 1-1/8" lid only.

RS - Stocked on a Regional Basis.
All others call for availability

TYLER UNION NON-DOMESTIC VALVE BOXES LP2011-NVB

HEAVY-DUTY VALVE BOXES †

† Other components and boxes may be available in Heavy Duty version. Please contact your Tyler Union Regional Representative.

Item	Ship Code	Item UPcode	List Price	Crate Quant	Weight lbs
------	-----------	-------------	------------	-------------	------------

HEAVY-DUTY 6850 SERIES CAST IRON TWO-PIECE VALVE BOXES

BOXES ASSEMBLED / LESS LID			HEIGHT RANGE			
461-S(10T+15B)	RS	*	19-22"	\$ 74.00	40	50
462-S(10T+24B)	RS	*	27-32"	\$ 85.50	20	58
562-S(16T+24B)	RS	*	27-37"	\$ 104.50	25	71
564-S(16T+36B)	RS	*	39-50"	\$ 125.00	20	85
666-S(26T+24B+60Ext)	RS	*	51-71"	\$ 157.50	20	122
TOPS LESS LID						
10T	RS	*		\$ 34.00	80	23
16T	RS	*		\$ 53.00	60	36
26T	RS	*		\$ 75.00	30	51
BOTTOMS						
15B	RS	*		\$ 40.00	40	27
24B	RS	*		\$ 51.50	30	35
30B	RS	*		\$ 62.00	30	42
36B	RS	*		\$ 72.00	30	49
OTHER ITEMS			HEIGHT INCREASE			
#60 EXTENSION	RS	*	24"	\$ 53.00	30	36
#69 RISER	RS	*	2-1/2"-9" Increase	\$ 42.50	30	29

HEAVY-DUTY 6855 SERIES CAST IRON TWO-PIECE VALVE BOXES

BOXES ASSEMBLED / LESS LID			HEIGHT RANGE			
461-A(10T+15B)	RS	*	19-22"	\$ 81.00	30	55
562-A(16T+24B)	RS	*	27-37"	\$ 106.00	30	72
564-A(16T+36B)	RS	*	39-50"	\$ 122.00	30	83
664-A(26T+36B)	RS	*	39-60"	\$ 145.00	30	99
TOPS LESS LIDS						
10T	RS	*		\$ 42.50	80	29
16T	RS	*		\$ 53.00	30	36
26T	RS	*		\$ 76.00	30	52
BOTTOMS						
15B	RS	*		\$ 38.50	40	26
24B	RS	*		\$ 53.00	30	36
30B	RS	*		\$ 66.00	30	45
36B	RS	*		\$ 69.00	30	47

HEAVY-DUTY 6860 SERIES CAST IRON THREE-PIECE VALVE BOXES

BOXES ASSEMBLED / LESS LID			HEIGHT RANGE			
D (26T+30B)	RS	*	45-66"	\$ 129.50	20	88
DD (26T+36B)	RS	*	51-72"	\$ 133.00	20	90
G (26T+36B+60Ext)	RS	*	74-94"	\$ 186.00	20	126
TOPS LESS LIDS						
16T	RS	*		\$ 53.00	60	36
26T	RS	*		\$ 75.00	30	51
BOTTOMS						
24B / 59 Ext	RS	*		\$ 48.50	30	33
30B	RS	*		\$ 54.50	30	37
36B	RS	*		\$ 58.00	30	39
OTHER ITEMS			HEIGHT INCREASE			
5-1/4" DROP LID "WATER"	RS	*		\$ 17.50	200	12
"OMA" DROP LID	RS	136927		\$ 17.50	200	12
"MWW" DROP LID	RS	136880		\$ 17.50	200	12
#60 SCREW-TYPE EXTENSION	RS	*	24"	\$ 53.00	30	36
#6 BASE	RS	*		\$ 65.50	43	45
#160 BASE	RS	*		\$ 99.00	45	88
#69 RISER	RS	*	2-1/2"-9"	\$ 42.50	30	29