

# SUBMITTAL

(Current revisions for all Standards apply)

- SIZES:** ..... Series 100 for 3" through 24"
- STANDARDS:** ..... Per ANSI/AWWA C110, C111, and C153; cast with ASTM A536 Ductile Iron.  
 Sizes 3"-12" are recommended for Class 50 through Class 56 ductile pipe  
 Sizes 14"-24" are recommended for Class 53 through Class 56 ductile pipe
- DEFLECTION:** ..... Maximum recommended deflection of joints is 2° for 3" through 12" and 1° for 14" through 24"
- BOLTS:** ..... ANSI/AWWA C111/A21.11-7, for assembly use AWWA C153 length standard T-bolts. The set screws are square headed with Type C knurled cup points, 4140 grade alloy steel that is heat treated to a Rockwell "C" 45/53 case hardness and are shipped assembled in the gland
- PRESSURE RATING:** ..... Refer to chart provided below
- NSF-61:** ..... Meets all requirements, UL Registered
- COATING:** ..... ANSI/AWWA C104/A21.4-08 (asphaltic paint that is NSF61 approved)
- INSTALLATION:** ..... Per Tyler Union instructions below. **Note: Not for use on Plain end fittings**

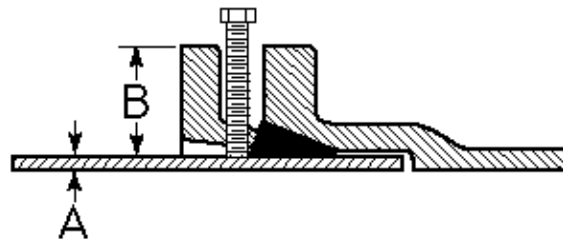
**T-BOLTS (to secure Gland to Hub)**

4" to 24" Retainer gland T-bolts torque to 60 ft lbs

**SET SCREWS (to secure Gland to Pipe)**

Set screw recommended torque value is 75 ft lbs

1. Wash bell and plain end with soapy water, then slip gland and gasket over plain end with the small side of the gasket and ring side of of the gland facing the bell.
2. Slip plain end into bell. Brush soapy water on gasket. This lubricates the gasket and allows it to slip easily into place. Push gasket into bell making sure it is evenly in the bell gasket landing.
3. Slide the gland into position against the back of the gasket. Align bolt holes, insert T-bolts and tighten nuts to finger tight.
4. Snug up all T-bolt nuts evenly. Alternating at 180°, tighten the T-bolt nuts to a torque of: 3" - 60 foot pounds  
4" thru 24" - 90 foot pounds.
5. Snug up all set screws evenly. Using a torque wrench, tighten the set screws alternating at 180° to the recommended torque value of 75 foot pounds. If required double check set screws immediately.



Size	Pressure Rating, psi	Gland O.D. B	Pipe O.D. A	D.I. Pipe Wall Class	No of Set Screws	Size of Set Screws	Gland Wt	Wt w/ Acces.
3	350	7.69	3.96	50-56	4	5/8x2	4	8
4	350	9.12	4.80	50-56	4	5/8x2	5	11
6	350	11.12	6.90	50-56	6	5/8x2	9	16
8	250	13.37	9.05	50-56	9	5/8x2	13	21
10	250	15.62	11.10	50-56	12	5/8x2	17	26
12	150	17.88	13.20	50-56	16	5/8x2	20	28
14	250	20.25	15.30	53-56	20	5/8x2 1/2	44	55
16	200	22.50	17.40	53-56	24	5/8x2 1/2	54	64
18	200	24.75	19.50	53-56	24	5/8x2 1/2	62	72
20	200	27.00	21.60	53-56	28	5/8x3	76	91
24	150	31.50	25.80	53-56	32	5/8x3	103	118

\* Not included in AWWA C110 or AWWA C153