

# SUBMITTAL

(Current revisions for all Standards apply)

**SIZES:** ..... 4" through 24"

**STANDARDS:** ..... ANSI/AWWA C153/A21.53-06 and NFPA 4"-16" UL Listed (EX2111)

**Note:** Cast with tested and traceable ASTM A536 Ductile Iron

**PRESSURE RATING:** 350 psi; except for wyes and flanged branch fittings

**Note:** Flanged branch **Non-Wye** fittings can be rated @ 350 psi with the use of special gasket. For 350 psi flange joint applications, we recommend the use of annular ring type gasket or comparable.

**NSF-61:** ..... Meets all requirements, UL Listed (MH16439)

**ASPHALTIC**

**COATING:** ..... ANSI/AWWA C104/A21.4-08

**CEMENT LINING:** .... ANSI/AWWA C104.A21.4-08 (Double Cement lined Available)

**EPOXY COATING:** .... ANSI/AWWA C116/A21.16-09

**Note:** Epoxy coated fittings available to the specification(s) in your application

**BELL SOCKETS:** ..... ANSI/AWWA C116/A21.16-09

**BOLTS:** ..... ANSI/AWWA C151/A21.51-09 and AWWA C900-97, Table 2

**BARE:** ..... Available

**DEFLECTION:** ..... Fittings 4" - 12", \*5 degree maximum & 14" - 24", \*3 degree maximum

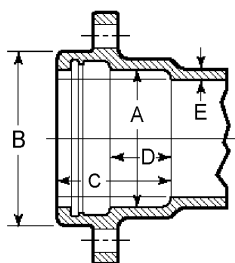
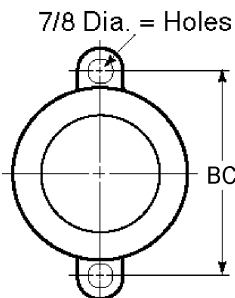
**Note:** If pipe O.D. & fitting I.D. at nominal, deflection is ~50% of maximum

**RESTRAINING LUGS:** Provided on 16" and smaller fittings and the lug pattern for all sizes accommodates most gripper-type restraints.

**Note:** Restraining lugs available for 18" - 24" fittings provided sufficient time is available to make pattern adaptations.

**INSTALLATION:** ..... Per AWWA C600-99 using pipe conforming to ANSI/AWWA C151/A21.51-02 and ANSI/AWWA C900-C905

**BELL DIMENSIONS IN INCHES FOR UNION-TITE FITTINGS**



Pipe Size	A	B	B.C.	C	D	E
4	5.04	6.38	7.88	4.16	2.25	.35
6	7.14	8.52	10.50	4.29	2.25	.37
8	9.32	10.90	12.88	4.78	2.25	.39
10	11.37	12.91	14.69	4.98	2.25	.41
12	13.47	15.12	17.19	4.98	2.25	.43
14	15.64	18.12	19.00	5.40	2.25	.51
16	17.74	20.32	21.40	5.40	2.25	.52
18	19.83	22.52	...	5.40	2.25	.59
20	21.94	24.29	...	5.40	2.25	.60
24	26.14	29.14	...	5.65	2.50	.62

**Tyler Union Waterworks Locations**

11910 CR 492 - Tyler, TX 75706 - (800) 527-8478      1501 W. 17th St. - Anniston, AL 36201 - (800) 226-7601  
1001 ElCamino Ave. - Corona, CA 92879 - (866) 527-8471      6204 N. Marine Dr. - Portland, OR 97203 - (866) 527-8471