

SUBMITTAL

(Current Revisions for All Standards Apply)

SIZES: 4" through 24"

STANDARDS: ANSI/AWWA C153/A21.53-06 and 3"-12" UL Listed (EX2111)

Note: Cast with tested and traceable ASTM A536 Ductile Iron

PRESSURE RATING: 350 PSI; Except for wyes and flanged branch fittings

Note: Flanged branch **Non-Wye** fittings can be rated @ 350 PSI with the use of special gasket. For 350 psi flange joint applications, we recommend the use of annular ring type gasket or comparable.

NSF-61: Meets all requirements, UL Certified

BITUMINOUS

COATING: ANSI/AWWA C104/A21.4-08

CEMENT LINING: ANSI/AWWA C104.A21.4-08

EPOXY COATING: ANSI/AWWA C116/A21.16-09

Note: Epoxy coated fittings are available to the specification(s) required for your application(s)

BELL SOCKETS: ANSI/AWWA C116/A21.16-09

BOLTS: ANSI/AWWA C151/A21.51-09 and AWWA C900-97, Table 2

BARE: Available

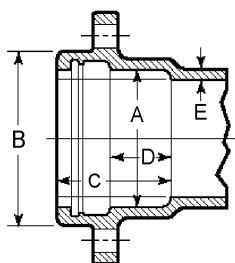
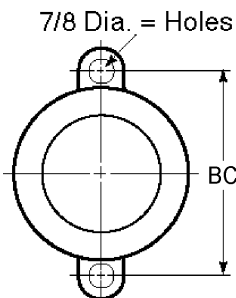
DEFLECTION: 5 Degrees Maximum

RESTRAINING LUGS: Provided on 16" and smaller fittings and the lug pattern for all sizes accommodates most gripper-type restraints.

Note: Restraining lugs available for 14"-24" fittings provided sufficient time is available to make pattern adaptations.

INSTALLATION: Per AWWA C600-99 using pipe conforming to ANSI/AWWA C151/A21.51-02

BELL DIMENSIONS IN INCHES FOR UNION-TITE FITTINGS



Pipe Size	A	B	B.C.	C	D	E
4	5.04	6.38	7.88	4.16	2.25	.35
6	7.14	8.52	10.50	4.29	2.25	.37
8	9.32	10.90	12.88	4.78	2.25	.39
10	11.37	12.91	14.69	4.98	2.25	.41
12	13.47	15.12	17.19	4.98	2.25	.43
14	15.64	18.12	...	5.40	2.25	.51
16	17.74	20.32	...	5.40	2.25	.52
18	19.83	22.52	...	5.40	2.25	.59
20	21.94	24.29	...	5.40	2.25	.60
24	26.14	29.14	...	5.65	2.50	.62