

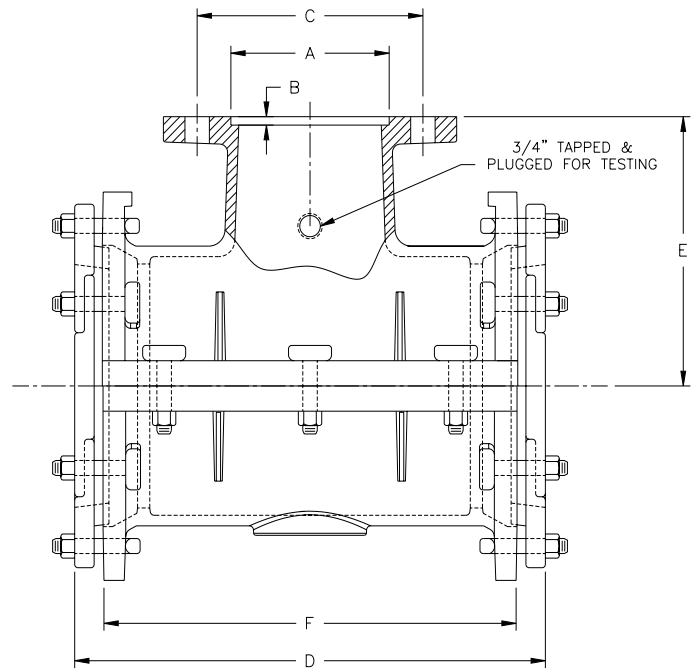
### SAMPLE SPECIFICATION

Ductile Iron Mechanical Joint Tapping Sleeves furnished by Tyler Pipe Company, Tyler, Texas are produced in accordance with manufacturer's standards. Chemical and physical properties of the ductile iron are in accordance with the requirements of ANSI/AWWA C110/A21.10-82.

Recess dimensions are per Manufacturer's Standardization Society standard practice SP-60.

### General Installation Instructions for Tyler MJ Tapping Sleeves

1. Clean pipe - insert side gasket into back half of gasket grooves. Make sure ends are flush with or slightly protrude into the end gasket seating area.
2. Bolt sleeve halves together and trim side gaskets as necessary. **MAKE SURE SLEEVE WILL ROTATE FREELY ON PIPE.**
3. Install end gaskets, locating cut ends 90° from side gasket. If pipe is maximum OD, stretch gasket to make certain cut ends match with no gap in between.
4. Install glands and bolts - rotate sleeve to desired position. Be sure pipe is centered inside the sleeve.
5. Tighten gland bolts alternately, using 80 to 90 foot pounds.
6. After assembly, **PRESSURE TEST ALL JOINTS BEFORE TAPPING.** If additional tightening is required, release pressure and relax tension on gland bolts before tightening side bolts.



For Cast Iron or Ductile Iron Pipe  
Mechanical joint tapping sleeves - for 6" through 12" cast iron or ductile iron pipe.

- Outlet flange per ANSI/AWWA C110/A21.10
- Gaskets furnished.
- Working pressure-200 p.s.i.

Tapping Sleeve for  
Cast Iron/Ductile Iron

Size	A	B	Dimensions		E	F	O.D. Range		Weight DI
			C	D			Min.	Max.	
6x4	5.016	.250	7.50	15.75	8.00	12.75	6.85	7.15	104
6	7.016	.312	9.50	15.75	8.00	12.75	6.85	7.15	108
8x4	5.016	.250	7.50	16.50	9.00	13.50	9.00	9.35	134
8x6	7.016	.312	9.50	16.50	9.00	13.50	9.00	9.35	140
8	9.016	.312	11.75	16.50	9.00	13.50	9.00	9.35	148
10x4	5.016	.250	7.50	24.00	11.00	20.75	11.04	11.45	236
10x6	7.016	.312	9.50	24.00	11.00	20.75	11.04	11.45	240
10x8	9.016	.312	11.75	24.00	11.00	20.75	11.04	11.45	246
10	11.016	.312	14.25	24.00	11.00	20.75	11.04	11.45	257
12x4	5.016	.250	7.50	26.50	12.00	23.25	13.14	13.56	273
12x6	7.016	.312	9.50	26.50	12.00	23.25	13.14	13.56	286
12x8	9.016	.312	11.75	26.50	12.00	23.25	13.14	13.56	292
12x10	11.016	.312	14.25	26.50	12.00	23.25	13.14	13.56	303
12	13.016	.312	17.00	26.50	12.00	23.25	13.14	13.56	320